

Antenna Alignment, Tracking and Stabilization

Extending Broadband beyond the reach of practical

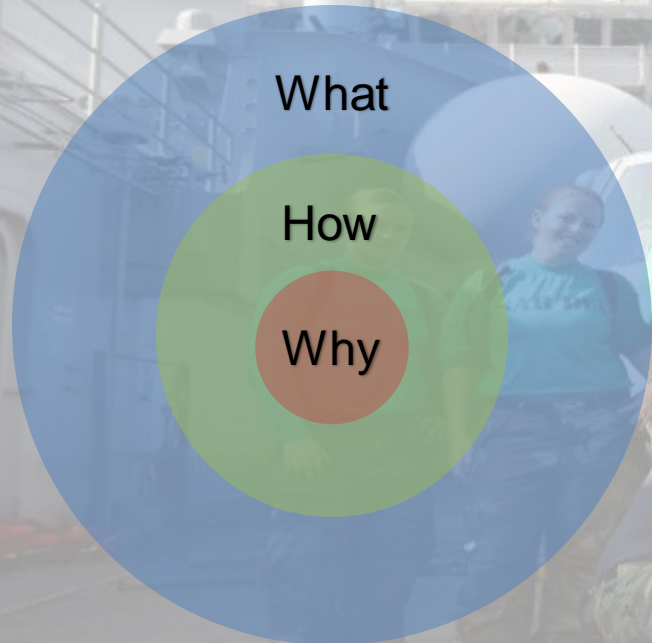
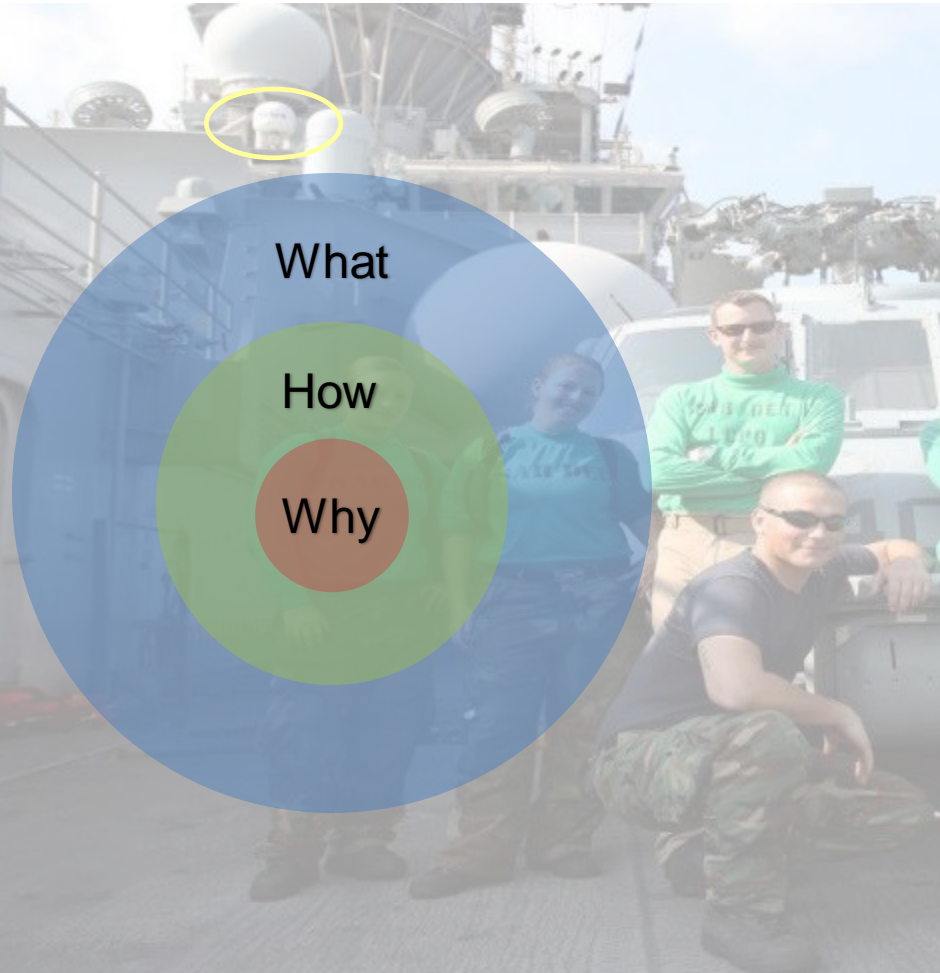


Elias Theodorou
V.P. Business Development

Email: etheodorou@batswireless.com

WWW.BATSWIRELESS.COM

Why BATS

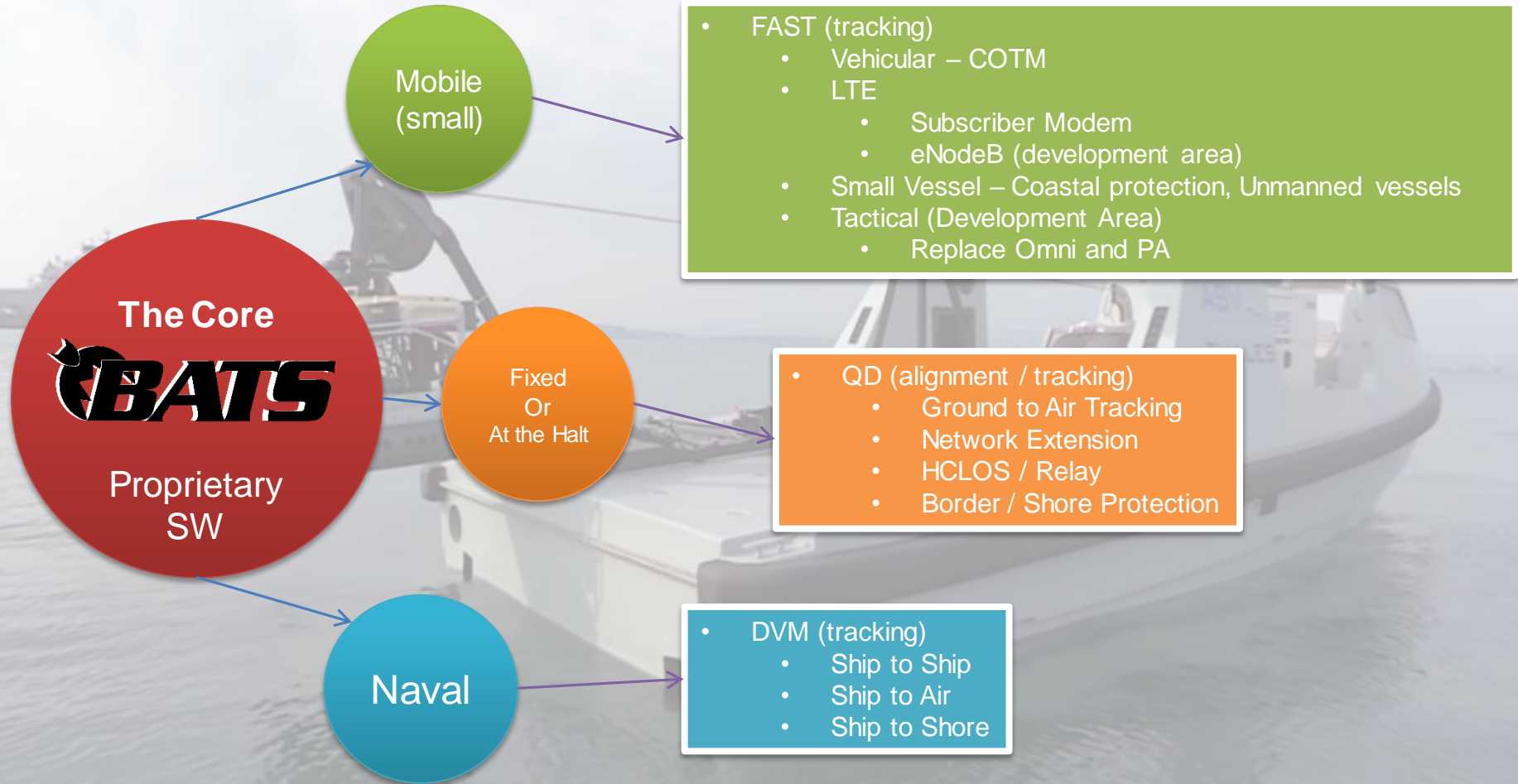


- BATS **believes** in extending broadband communications in hard to reach, harsh environments and platforms where only SATCOM has been an option

- BATS achieves this with cutting edge HW and SW algorithms to remove the need for experts in the field while increasing network mobility – “**made easy**”

- Industry first – radio agnostic Automatic Alignment and Tracking systems for microwave communications – enabling Mbps to Gbps data speeds

Technology map to Tactical Market



Terrestrial

Sea

Aerial

LTE



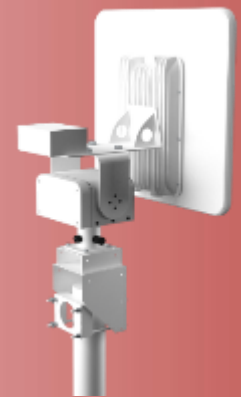
Delivering Broadband communications solutions to enable the most advanced military networks.



Electronically Steered



Domed



Quick Deploy



Ground to Air

Link Performance

- Advertised Data rates depend on Link Quality
- Ultra Orion – **230 Mbps**
 - BPSK – 64 QAM
- Harris 7800W – **476 Mbps**
 - BPSK – 256 QAM
- Cambium PTP Series - **1.66 Gbps**
 - QPSK – 2048 QAM
- GD Fortress – **200 Mbps**
 - Secure Wi-Fi (802.11 a/b/g and n)
- Typical Antennas Used
 - 5 GHz 2 Foot Panel : **6°** Beam width
 - 5 GHz 3 Foot Grid : **4°** Beam width
 - 40 GHz 2 Foot Dish : **.9°** Beam width
- Highest rates **only** achieved with highest modulations
- Manual Alignment within 3 dB is impossible



Alignment is not an option... it is a must!

Markets

Industry Leader

